

# SonoScape



www.sonoscape.com

CE 0434 ISO 13485

## SonoScape

Yizhe Building, Yuquan Road, Shenzhen, 518051, China  
Tel: +86-755-26722860 Fax: +86-755-26722850  
E-mail: sonoscape@sonoscape.net www.sonoscape.com

2008 FROST & SULLIVAN  
Entrepreneurial Company Award

2009 FROST & SULLIVAN  
Product Quality Leadership Award

Frost & Sullivan, the Global Leading Consultant Company, enables partners to accelerate growth and achieve best in class positions in growth, innovation and leadership. SonoScape has continuously won the "Entrepreneurial Company Award" in 2008 and the "Product Quality Leadership Award" in 2009. Such recognition can have a profound impact in enhancing the brand value and thereby accelerating the growth of SonoScape.

#### Product Performance

The S8 is versatile in performance, especially in cardiovascular field. The high frame rate and high definition image quality provide users better diagnostic experience than ever. Besides, it is the only system has a combination of 4D and echocardiography capability.

#### Product Reliability

The S8 offers TEE and pediatric TEE capability with multi-plane acoustic head. As a result, cardiologists can better analyze the hemodynamic information – even if the patient is a new-born – that is unique to the S8.

#### Product Design

The S8 can be connected to two transducers at the same time. It allows for easy portability, and it can also be mounted on a well-designed trolley to be used as a stationary ultrasound.

#### Product Usability

Irrespective of the multiple features the S8 offers, its user-interface is designed in a simple format and hardly any training is required for its usability by the sonographer.

#### Perceived Value

SonoScape offers no other products besides ultrasound equipment. Hence their administration, R&D initiatives, marketing and sales are entirely concerned with ultrasound only. In spite of offering a low price, the S8 is superior in image quality, design, compactness and special features offered.



## Powerful Lightweight Like Nothing Else

The S8 is designed by our genius engineers in a very lightweight but powerful architecture. Although combining high capacity built-in Li-ion battery and two active transducer sockets, S8 still keeps slim and lightweight compact architecture, assuring it will be available anytime and anywhere.

- 15" LCD anti-glare screen: provide clear image from any angle
- 2 universal transducer sockets for quick transducer switch during scanning
- Abundant connection interfaces: DICOM 3.0, USB port, VGA, S-video, and ECG
- Built-in Li-ion battery for continuous scanning more than one hour
- With the slim and compact trolley, S8 can be also used in a stationary way.





The S8 is a full-featured portable color Doppler unit from SonoScape, designed in a new powerful lightweight architecture to meet all your high performance application requirements, from volumetric 4D with superior rendering capabilities, to cardiovascular exams including adult and pediatric multi-plane transesophageal echocardiography (TEE).

With the superior imaging quality and powerful workflow typically available only in the very high-end cart-based systems, this system is built to deliver outstanding value for our customers worldwide.

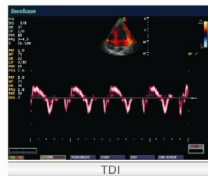
## Cutting-edge Features



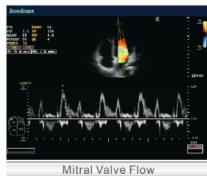
- Complete imaging mode: 2D with THI, Color M, CDFI, PDI, PW, HPRF, CW
- Full cardiovascular transducers: adult and pediatric TEE, phased array, pediatric phased array, high frequency linear array
- Support high density broadband transducers
- Integrated with state-of-the-art technologies:  $\mu$ -scan, B-steer, Multiple-beam processing, and 4D imaging
- Comprehensive cardiovascular packages: Stress echo, TDI, Steer M, IMT, and Automatic flow volume analysis
- Intuitive interface and full functional control panel

# The Multi-specialty High Performance Imaging

SonoScape has been focusing on what's the most important thing for an ultrasound system, the image quality, and successfully developed S9 to allow you to achieve crystal clear images with greater accuracy for your confident diagnosis on a very wide variety of patients.



TDI



Mitral Valve Flow



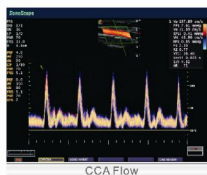
TEE



Mitral Stenosis



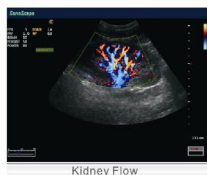
Stress Echo



CCA Flow



Hepatic Vein



Kidney Flow



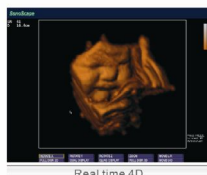
Umbilical Entanglement



Ovary



Umbilical Flow



Real time 4D

