

# Ergonomics by Design

Vivid P3 is tailored for a variety of clinical settings

- **Lightweight system** with compact shape, small footprint and high mobility
- **Logical key layout** supports smooth and efficient workflow
- **High resolution wide angle 15" LCD display** with tilt and swivel functionality allows various viewing positions



# Simple, fast, efficient Data Management

Saving and archiving data is an important part of the diagnostic process. Vivid P3 has been designed to reduce the effort of data management.

- **Direct Store** images to the internal hard drive.
- **QuickSave** image data on memory stick or into a network by one button push
- **MPEGvue** for easy transfer of images and loops in universal MPEG format to media
- **DICOM complaint** that includes services Modality Worklist, Store, Print and Structured Report



© 2010 General Electric Company - All rights reserved.

General Electric Company reserves the right to make changes in specifications and features shown herein, or discontinue the product described at any time without notice or obligation.

GE and GE Monogram are trademarks of General Electric Company.

Vivid and TruScan are trademarks of GE Medical Systems Ultrasound and Primary Care Diagnostics, LLC.

DICOM is a registered trademark of the National Electrical Manufacturers Association for its standards publications relating to digital communications of medical information.

GE Medical Systems Ultrasound & Primary Care Diagnostics, LLC, a General Electric company, doing business as GE Healthcare.

## Healthcare Re-imagined

GE is dedicated to helping you transform healthcare by driving critical breakthroughs in biology and technology. Our expertise in medical imaging and information technologies, medical diagnostics, patient monitoring systems, drug discovery, and biopharmaceutical manufacturing technologies is enabling healthcare professionals around the world to discover new ways to predict, diagnose and treat disease earlier. We call this model of care “Early Health.” The goal: to help clinicians detect disease earlier, access more information and intervene earlier with more targeted treatments, so they can help their patients live their lives to the fullest. Re-think, Re-discover, Re-invent, Re-imagine.

GE Healthcare  
9900, Innovation Drive,  
Wauwatosa, WI 53226  
U.S.A

[www.gehealthcare.com](http://www.gehealthcare.com)



GE Healthcare

# Vivid P3

Cardiovascular ultrasound system







Help enhance diagnostic confidence and productivity with an ultrasound system that's right for you.

## Advanced Imaging technology

GE's TruScan™ architecture provides exceptional ultrasound performance. Its raw data based processing allows images to be viewed, measured, optimized and analyzed online, from the cine loop memory and from stored exams, without losing any of the original image quality. It enables virtual re-scan on exams stored a long time ago.

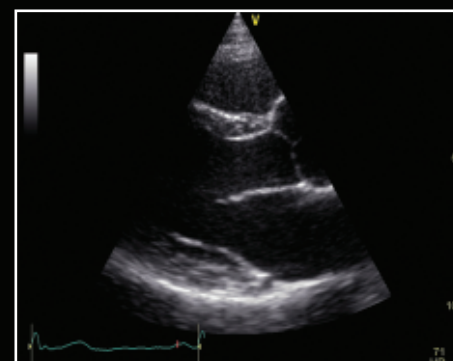


- **Auto Optimization** for Tissue, Color and Spectrum - optimized scanning and consistent image quality with one button touch
- **Auto TGC** for image uniformity with one button touch
- **Speckle Reduction Imaging** provides reduction in speckle noise, improved signal to noise ratio
- **Phase Inversion Harmonics** provides higher spatial resolution and deeper penetration
- **Live Anatomical M Mode** allows easy to obtain on axis measurements in non-standard planes. Plus M-Mode to help assess LV wall motion in apical planes
- **Virtual Apex** allows a wider field of view in the near field with phased array transducers
- **LVO Contrast** for enhanced visualization of the LV border to help diagnose abnormalities – plus wall motion analysis and ejection fraction calculation
- **Stress echo** is based on raw data image acquisition, with flexible templates (includes template editor) for exercise and pharmacological protocols, supported by several assessment tools.

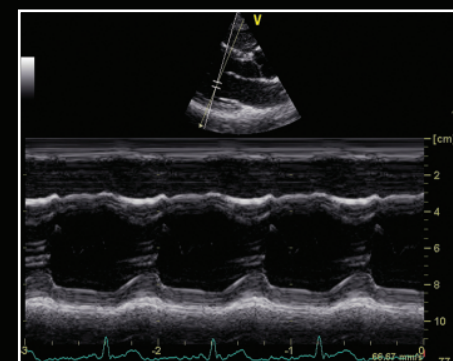
## A variety of features

Features have been migrated from the GE Vivid family and specifically developed for Vivid P3 to allow a smooth and efficient workflow and informed decision making.

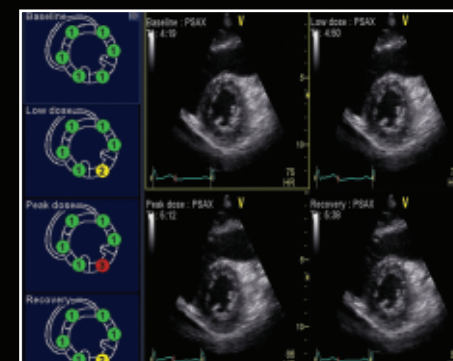
- **Multiple foci control** - Optimizes the image resolution to the diagnostic requirements
- **B Steer** - Ability to steer the field of view left, right or straight under challenging conditions without losing lateral resolution
- **Compound Imaging** - Improves vessel wall definition, improved spatial and contrast resolution
- **LOGIQView**- Enables an extended field of view to image large organs, usually not seen in a single image
- **Gynecology and Obstetrics** package, plus **Easy 3D** – see organ position in relation to surrounding anatomy
- **Report designer** - Onboard reporting with standard and customized report templates
- **3 active probe connectors** - Supports a variety of transducers, including adult and pediatric cardiac, linear and convex arrays, endo cavity and intra operative transducers



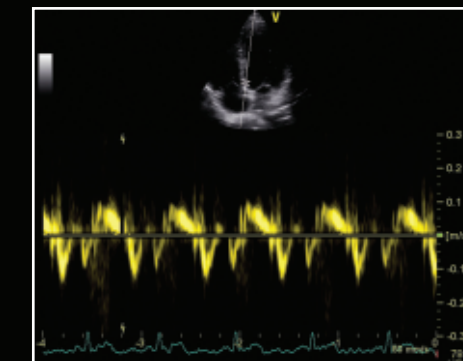
Auto optimization



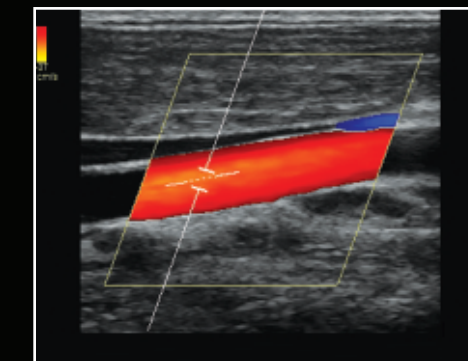
Anatomical M-Mode



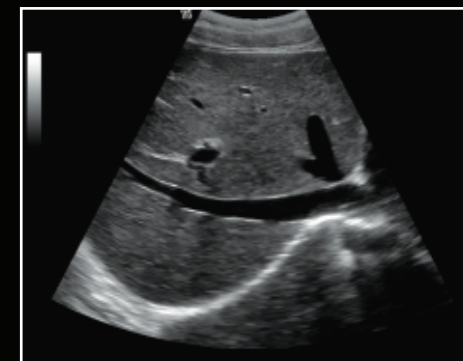
Stress echo analysis



Tissue Doppler



Color Doppler, Harmonic Imaging and Compound Imaging



Multiple foci control, Compound Imaging